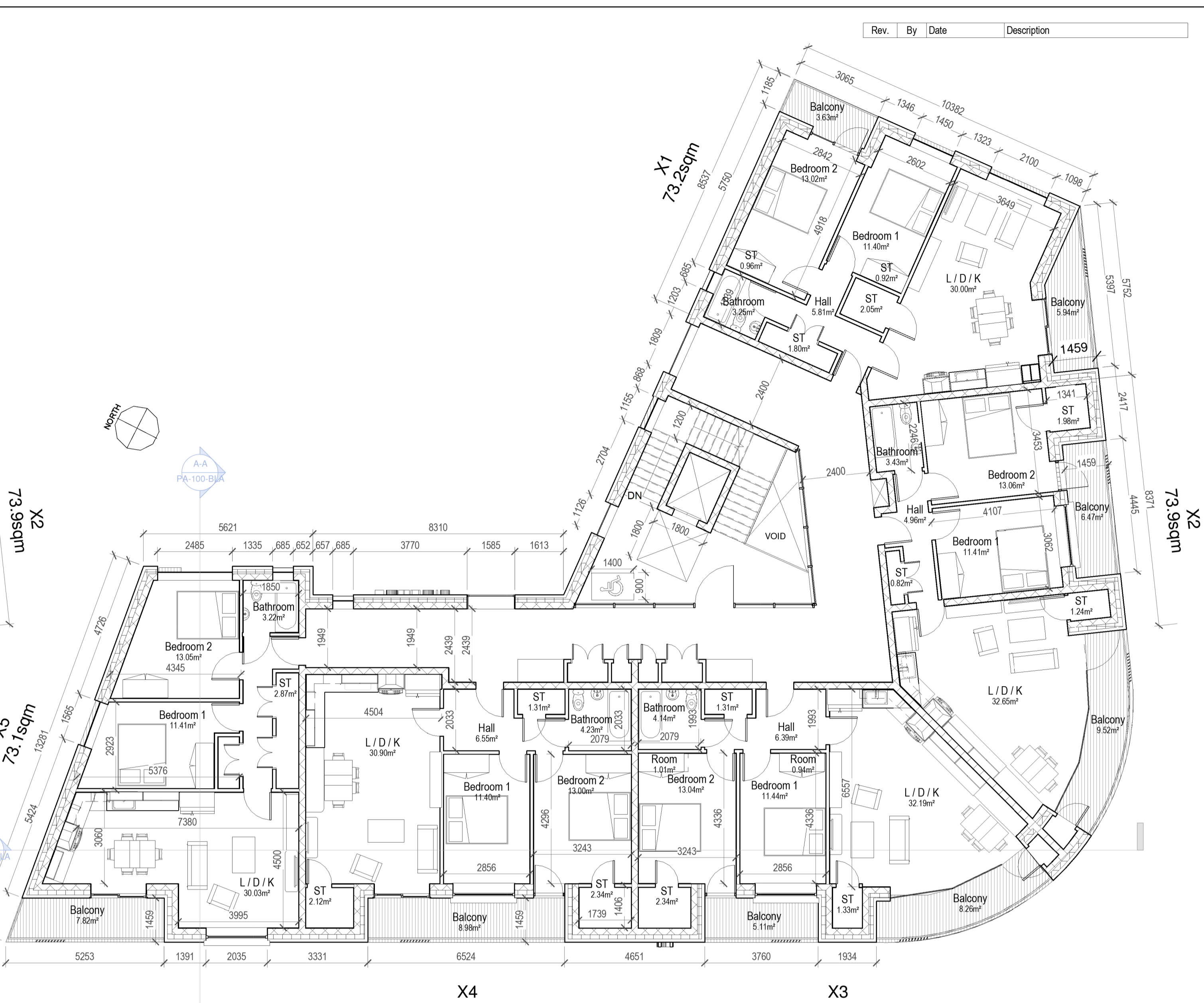
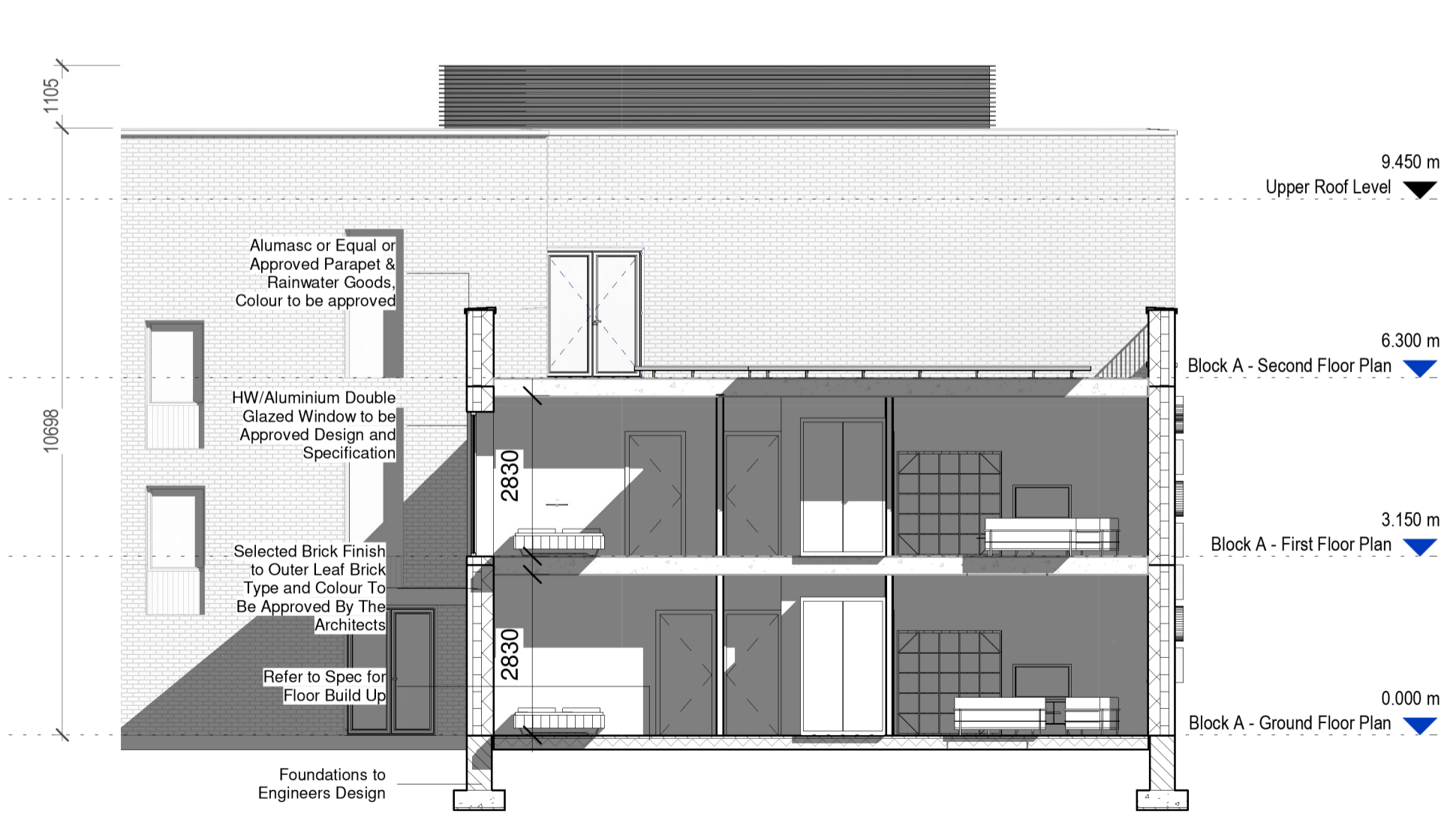
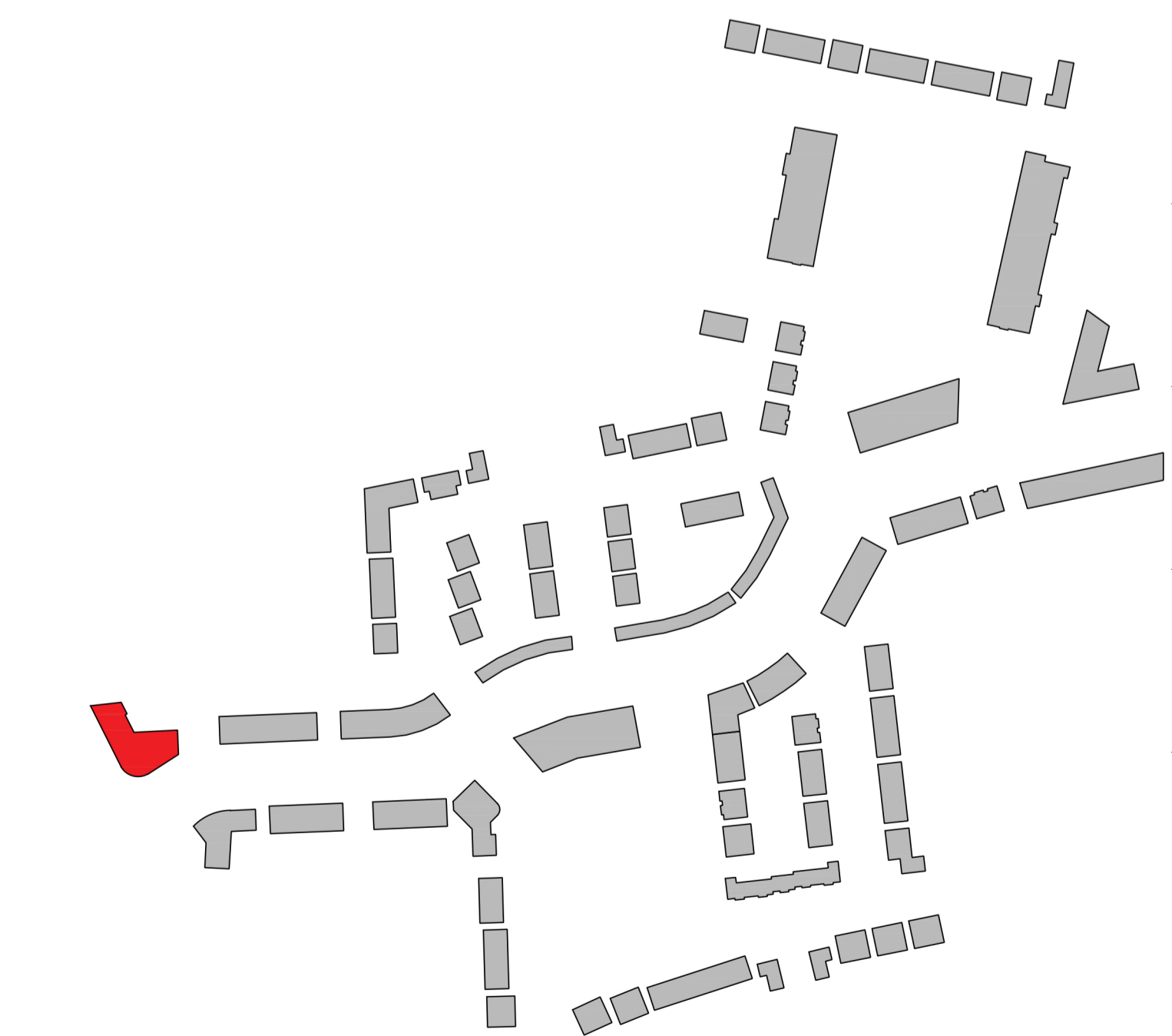


1 Block A - Ground Floor Plan  
1:100



2 Block A - First Floor Plan  
1:100



A-A Block A - Section Facing South  
1:100

Apartment - Block A

Apt. X1 (3no.)

Sustainable Urban Housing: Design Standards for New Apartments (2018)						
APT X1	Dwelling Type	Gross Floor Area	Aggregate living area	Aggregate bedroom area	Storage	Private Amenity Space
Target	2 Bed / 4 Person	73	30	24.4	6	7
Proposed	2 Bed / 4 Person	73.2	30	24.4	6	9.46

Apt. X2 (3no.)

Sustainable Urban Housing: Design Standards for New Apartments (2018)						
APT X1	Dwelling Type	Gross Floor Area	Aggregate living area	Aggregate bedroom area	Storage	Private Amenity Space
Target	2 Bed / 4 Person	73	30	24.4	6	7
Proposed	2 Bed / 4 Person	73.9	32.7	24.4	6.24	15.88

Apt. X3 (3no.)

Sustainable Urban Housing: Design Standards for New Apartments (2018)						
APT X1	Dwelling Type	Gross Floor Area	Aggregate living area	Aggregate bedroom area	Storage	Private Amenity Space
Target	2 Bed / 4 Person	73	30	24.4	6	7
Proposed	2 Bed / 4 Person	74.2	31.8	24.4	6.24	13.89

Apt. X4 (2no.)

Sustainable Urban Housing: Design Standards for New Apartments (2018)						
APT X1	Dwelling Type	Gross Floor Area	Aggregate living area	Aggregate bedroom area	Storage	Private Amenity Space
Target	2 Bed / 4 Person	73	30	24.4	6	7
Proposed	2 Bed / 4 Person	74.2	30.9	24.4	6.15	9.69

Apt. X5 (2no.)

Sustainable Urban Housing: Design Standards for New Apartments (2018)						
APT X1	Dwelling Type	Gross Floor Area	Aggregate living area	Aggregate bedroom area	Storage	Private Amenity Space
Target	2 Bed / 4 Person	73	30	24.4	6	7
Proposed	2 Bed / 4 Person	73.1	30	24.4	6	7.23

PLEASE NOTE:  
Minimum unobstructed living room width: 3.6m for double bedroom apartments and 3.3m for one bedroom apartment.  
Main bedroom area 13m<sup>2</sup>, Double room 11.4m<sup>2</sup> (2.8m minimum width), Single 7.1m<sup>2</sup> (2.1m minimum width)

NOTE:  
Levels shown on architectural block plans relate to local Ground Floor Level and do not relate to Ordnance Datum.  
For Finished Ground Floor Levels related to Ordnance Datum see DBFL Engineers drawings numbered:  
180002-2000 Roads Layout / 180002-2001 Roads Layout Sheet 1 / 180002-2002 Roads Layout Sheet 2

**CPR Note:**  
All works to be carried out using proper materials which are fit for the use they are intended and for the condition in which they are to be used.  
All materials used in connection with the works to comply with the Construction Products Regulation (EU) No. 305/2011 and the harmonised technical specification/standards that fall within the remit of the CPR No. 305/2011

**van Dijk Architects**  
MILL HOUSE, MILL STREET, DUNDALK, CO. LOUTH  
PH: 042-9354466 FAX: 042-9354460  
INFO@VANDIJKARCHITECTS.COM

DRAWING TITLE: **APARTMENT BLOCK A - GROUND & FIRST FLOOR PLANS & SECTION**

SCALE: DRAWING NUMBER: 1757-PA-100-B/A JOB: CLONMINTCH TULLAMORE  
DESIGNER: BMG POS CAD REFERENCE: CLIENT: STEINFORT INVESTMENT  
REVISED: BMG DRAWING: PD DATE: FEB 2021

PLEASE NOTE:  
FIGURED DIMENSIONS MUST BE USED IN PREFERENCE TO SCALE DIMENSIONS. ANY DIMENSIONAL DISCREPANCIES MUST BE REPORTED TO THE ARCHITECT IMMEDIATELY. THIS DRAWING REMAINS THE COPYRIGHT OF VAN DIJK ARCHITECTS. IT MUST NOT BE USED FOR ANY PURPOSES OTHER THAN THAT FOR WHICH IT WAS ISSUED WITHOUT THE EXPRESS PERMISSION OF VAN DIJK ARCHITECTS. DO NOT COPY OR REPRODUCE THESE DRAWINGS OR ANY ADDITIONAL INFORMATION WITHOUT THE EXPRESS APPROVAL OF VAN DIJK ARCHITECTS